

# PROMICAM PRO 3-3CP

## 3.1 MP Color CMOS USB 3 High Performance Digital Camera with Affordable Price



### High Image Quality, Excellent Color Reproduction

3.1 MP sensor provides high image quality and excellent color reproduction for an affordable price. The camera is suitable for a wide range of applications.

### Global Shutter

The sensor uses global shutter, which enables observation of fast-moving objects without image distortion.

### High Live View Frame Rates Suitable for "Live Imaging" Applications

Modern USB 3.1 Gen 1 interface provides high live view frame rates, while CPU load remains low. Live view in full 3.1 MP resolution can be displayed with frame rate up to 60 fps, in Full HD (1920 x 1080 - using ROI feature) live view can be displayed with frame rate up to 90 fps.

### High Sensitivity, High Dynamic Range and Low Noise Level

The used SONY® Pregius CMOS sensor brings high sensitivity, high dynamic range and very low noise level. Those parameters make the camera suitable also for low-light applications like darkfield or moderate light fluorescence.

### Support in QuickPHOTO Programs

QuickPHOTO programs for digital photomicrography provide full control of camera's features, e. g.: live view display, manual and automatic exposure, white balance, black balance, gain, gamma, hue, shading correction, measurements in a live view and many more.

PROMICAM PRO 3-3CP is also supported by following extension SW modules for QuickPHOTO:

- **Deep Focus** EDF module
- Live stitching using **Image Stitching** module
- Automated HDR image acquisition using **HDR** module
- Real-time video recording using **RECORD IT** module

### Main Features:

- 1/1.8" SONY® Pregius CMOS color sensor
- 3.1 MP sensor resolution
- High image quality
- Excellent color reproduction
- Exposure time up to 4 s
- Global shutter
- High sensitivity, high dynamic range, low noise level
- Live view frame rate up to 60 fps in full 3.1 MP resolution
- USB 3.0 / USB 3.1 Gen 1 interface
- Screw lock USB connector
- Supported by QuickPHOTO programs

### Suitable for Applications:

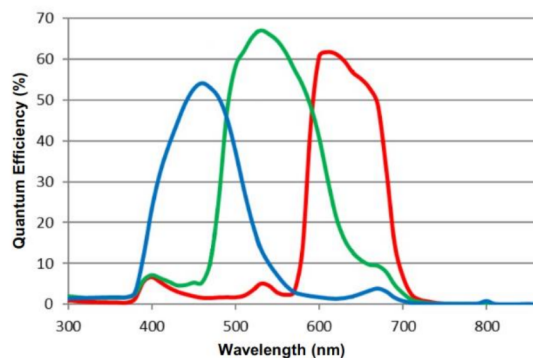
- Brightfield/Darkfield
- DIC
- Biology/Live Cell Imaging
- Moderate Light Fluorescence
- Gel Documentation
- Histology/Pathology/Cytology
- Metrology/Mineralogy/Metallurgy/Geology
- Quality Control/Semiconductor Inspection
- Documentation and Archiving
- Education

**bestscientific.co.uk**

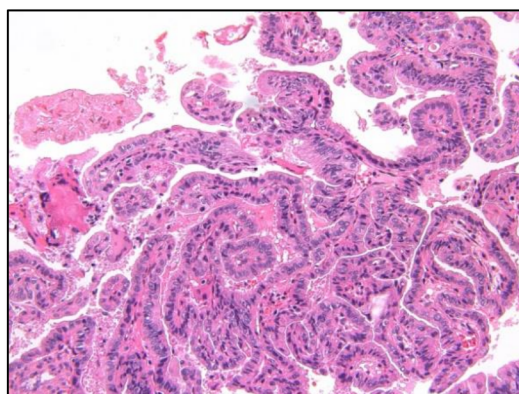
For more information, contact Best Scientific  
t: +44 (0)1793 812477 | e: enq@bestscientificweb.com

Sensor Specifications	
Sensor Type	Sony® Pregius CMOS, color, global shutter
Sensor Size	1/1.8" (8.45 x 7.07 mm)
Sensor Aspect Ratio	4:3
Pixel Size	3.45 x 3.45 µm
Resolution	2048 x 1536 pixels (3.1 MP)
Supported Software	
Software	QuickPHOTO in version 3.2 or higher (not included)
Camera Specification (when used with QuickPHOTO programs)	
Image Resolution	2048 x 1536, 1920 x 1080 (Full HD), 1024 x 768 pixels
Live View Resolution@Max. Frame Rate (fps)	2048 x 1536 @60 fps 1920 x 1080 (Full HD - ROI) @90fps 1024 x 768 (subsampling) @200 fps
Lower Resolutions	Subsampling, ROI
Exposure Times	1/40000 s (25 µs) - 4 s
Gain	1 – 251x
Exposure Mode	Automatic, automatic-interactive, fluorescence (SFL Auto), manual
White Balance	Automatic, automatic-regional, manual
Black Balance	Automatic-regional, manual
Camera Characteristics	
Interface	USB 3.0 / USB 3.1 Gen 1 (backwards compatible with USB 2.0)
USB connector	Micro B screw lock
Mount	C-mount/ CS-mount
Dimensions	43 x 29 x 29 mm
Weight	65 g
Tripod Mount	1/4" - 20
Recommended Microscope Coupler	0.5x C-mount
Compliances	CE certified, RoHS, WEEE, FCC
Included in the Box	PROMICAM PRO 3-3CP camera, 3 m USB 3.0 cable with lock screw connector
Minimal System Requirements	
Processor	Intel® Core™ i3 / AMD RYZEN™ 3
RAM	2 GB
USB port	1x USB 3.0 port
Operating System	Microsoft® Windows® 7/8/8.1/10/11 (32bit or 64bit)
Recommended Computer Configuration	
Processor	Intel® Core™ i5 / AMD RYZEN™ 5 or better
RAM	8 GB or more
USB port	1x USB 3.0 port
Operating System	Microsoft® Windows® 10/11 (64bit)

## Spectral Sensitivity:



## Sample Images:



bestscientific.co.uk

For more information, contact Best Scientific  
t: +44 (0)1793 812477 | e: enq@bestscientificweb.com