

# PROMICAM PRO 3-5CP

## 5 MP Color CMOS USB 3 High Performance Digital Camera for a Wide Range of Applications



### High Image Quality, Excellent Color Reproduction and Large Field of View

5 MP sensor with 2/3" diagonal provides high image quality, excellent color reproduction and large field of view.

### Global Shutter

The sensor uses global shutter, which enables observation of fast-moving objects without image distortion.

### High Live View Frame Rates Suitable for "Live Imaging" Applications

Modern USB 3.1 Gen 1 interface provides high live view frame rates, while CPU load remains low. Live view in full 5 MP resolution can be displayed with frame rate up to 38 fps, in Full HD (1920 x 1080 - using ROI feature) live view can be displayed with frame rate up to 90 fps.

### High Sensitivity, High Dynamic Range and Low Noise Level

The used SONY® Pregius CMOS sensor brings high sensitivity, high dynamic range and very low noise level. Those parameters make the camera suitable also for low-light applications like darkfield or moderate light fluorescence.

### Support in QuickPHOTO Programs

QuickPHOTO programs for digital photomicrography provide full control of camera's features, e. g.: live view display, manual and automatic exposure, white balance, black balance, gain, gamma, hue, shading correction, measurements in a live view and many more.

PROMICAM PRO 3-5CP is also supported by following extension SW modules for QuickPHOTO:

- **Deep Focus** EDF module
- Live stitching using **Image Stitching** module
- Automated HDR image acquisition using **HDR** module
- Real-time video recording using **RECORD IT** module

### Main Features:

- 2/3" SONY® Pregius CMOS color sensor
- 5 MP sensor resolution
- High image quality
- Large field of view
- Excellent color reproduction
- Exposure time up to 4 s
- Global shutter
- High sensitivity, high dynamic range, low noise level
- Live view frame rate up to 38 fps in full 5 MP resolution
- USB 3.0 / USB 3.1 Gen 1 interface
- Screw lock USB connector
- Supported by QuickPHOTO programs

### Suitable for Applications:

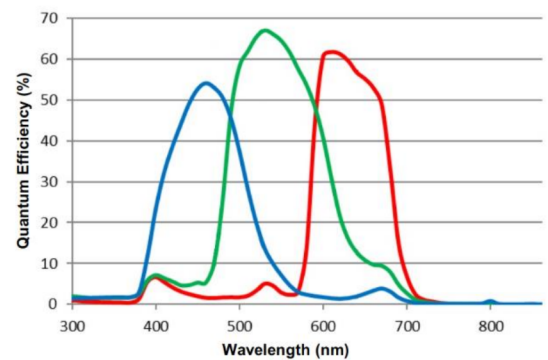
- Brightfield/Darkfield
- DIC
- Biology/Live Cell Imaging
- Moderate Light Fluorescence
- Gel Documentation
- Histology/Pathology/Cytology
- Metrology/Mineralogy/Metallurgy/Geology
- Quality Control/Semiconductor Inspection
- Documentation and Archiving
- Education

[bestscientific.co.uk](http://bestscientific.co.uk)

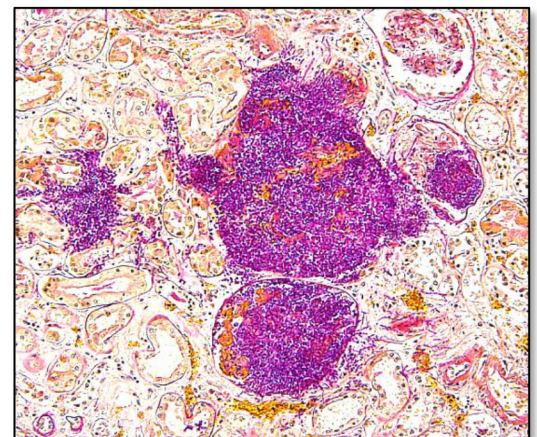
For more information, contact Best Scientific  
t: +44 (0)1793 812477 | e: [enq@bestscientificweb.com](mailto:enq@bestscientificweb.com)

Sensor Specifications	
Sensor Type	Sony® Pregius CMOS, color, global shutter
Sensor Size	2/3" (8.45 x 7.07 mm)
Sensor Aspect Ratio	6:5
Pixel Size	3.45 x 3.45 µm
Resolution	2448 x 2048 pixels (5 MP)
Supported Software	
Software	QuickPHOTO in version 3.2 or higher (not included)
Camera Specification (when used with QuickPHOTO programs)	
Image Resolution	2448 x 2048, 2448x 1376, 1920 x 1080 (Full HD), 1216 x 1024 pixels
Live View Resolution@Max. Frame Rate (fps)	2448 x 2048 @38 fps 2448 x 1376 (16:9 - ROI) @56fps 1920 x 1080 (Full-HD -ROI) @90 fps 1216 x 1024 (subsampling) @140 fps
Lower Resolutions	Subsampling, ROI
Exposure Times	1/40000 s (25 µs) - 4 s
Gain	1 – 251x
Exposure Mode	Automatic, automatic-interactive, fluorescence (SFL Auto), manual
White Balance	Automatic, automatic-regional, manual
Black Balance	Automatic-regional, manual
Camera Characteristics	
Interface	USB 3.0 / USB 3.1 Gen 1 (backwards compatible with USB 2.0)
USB connector	Micro B screw lock
Mount	C-mount/ CS-mount
Dimensions	43 x 29 x 29 mm
Weight	65 g
Tripod Mount	1/4" - 20
Recommended Microscope Coupler	0.63x or 1x C-mount
Compliances	CE certified, RoHS, WEEE, FCC
Included in the Box	PROMICAM PRO 3-5CP camera, 3 m USB 3.0 cable with lock screw connector
Minimal System Requirements	
Processor	Intel® Core™ i3 / AMD RYZEN™ 3
RAM	2 GB
USB port	1x USB 3.0 port
Operating System	Microsoft® Windows® 7/8/8.1/10/11 (32bit or 64bit)
Recommended Computer Configuration	
Processor	Intel® Core™ i5 / AMD RYZEN™ 5 or better
RAM	8 GB or more
USB port	1x USB 3.0 port
Operating System	Microsoft® Windows® 10/11 (64bit)

## Spectral Sensitivity:



## Sample Images:



[bestscientific.co.uk](http://bestscientific.co.uk)

For more information, contact Best Scientific  
t: +44 (0)1793 812477 | e: [enq@bestscientificweb.com](mailto:enq@bestscientificweb.com)